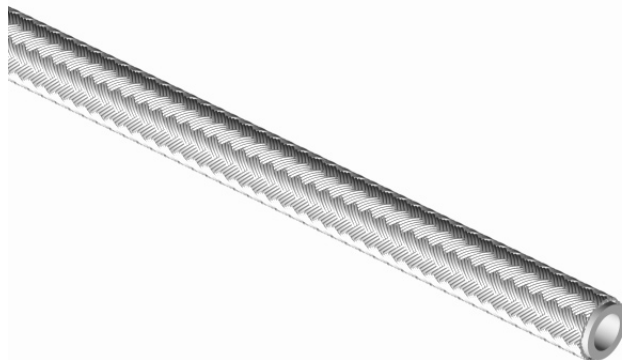
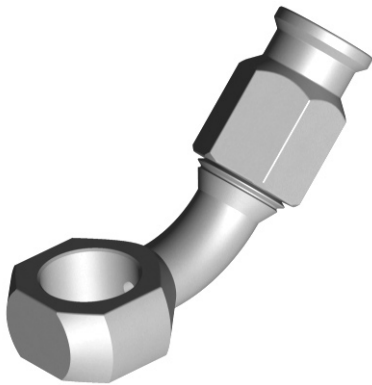




Brake Hose Fittings





Brake Hose Fittings

Nut



Part No.	Dimension
95-10-0010	M10x1

Matrl: Stainless steel

Straight Female



Part No.	Dimension
97-001-OE	M 10x1
97-001-OK	UNF 3/8"

Matrl: Stainless steel

Collet



95-10-0050	-3
------------	----

Matrl: Brass

Straight Male



97-001-OF	M 10x1
-----------	--------

Matrl: Stainless steel

Hose



96-01-035-*	-3
-------------	----

(* length in Meters)

Straight Female Thread



97-001-OG	M 10x1.25
97-001-OH	M 10x1
97-001-OI	UNF 3/8"

Matrl: Add to part nr -S for Stainless Steel
-A for Aluminium

Straight Male Thread



97-001-OA	M 10x1.25
97-001-OC	M 10x1
97-001-OD	UNF 3/8"

Matrl: Add to part nr -S for Stainless Steel
-A for Aluminium

Straight Male Taper



97-001-OJ	NPTF 1/8"
-----------	-----------

Matrl: Stainless steel

Straight Swivel Nut



97-001-OB	M 10x1
-----------	--------

Matrl: Add to part nr -S for Stainless Steel
-A for Aluminium

Straight Swivel Female



97-012-OA	M 10x1.25
97-012-OB	M 10x1
97-012-OC	UNF 3/8"

Matrl: Stainless steel



Brake Hose Fittings

Banjo Straight



Part No.	Dimension
----------	-----------

97-007-OA	Ø 10 mm
-----------	---------

Matrl: Add to part nr -S for Stainless Steel
-A for Aluminium

Banjo 20°



97-007-OB	Ø 10 mm
-----------	---------

Matrl: Add to part nr -S for Stainless Steel
-A for Aluminium

Banjo 45°



97-007-OC	Ø 10 mm
-----------	---------

Matrl: Stainless steel

Banjo Curved 20°



97-007-OD	Ø 10 mm
-----------	---------

Matrl: Add to part nr -S for Stainless Steel
-A for Aluminium

Banjo Straight



97-009-OA	Ø 8 mm
-----------	--------

Matrl: Add to part nr -S for Stainless Steel
-A for Aluminium

Banjo 20°



97-009-OB	Ø 8 mm
-----------	--------

Matrl: Add to part nr -S for Stainless Steel
-A for Aluminium

Banjo 45°



97-009-OC	Ø 8 mm
-----------	--------

Matrl: Stainless steel

Banjo Curved 20°

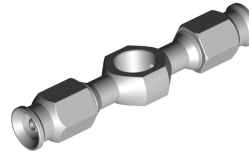


Part No.	Dimension
----------	-----------

97-009-OD	Ø 8 mm
-----------	--------

Matrl: Add to part nr -S for Stainless Steel
-A for Aluminium

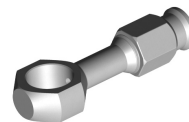
Double Banjo Straight



97-011-OA	Ø 10 mm
-----------	---------

Matrl: Add to part nr -S for Stainless Steel
-A for Aluminium

Banjo Straight



97-013-OA	Ø 11 mm
-----------	---------

Matrl: Add to part nr -S for Stainless Steel
-A for Aluminium

Banjo 20°



97-013-OB	Ø 11 mm
-----------	---------

Matrl: Add to part nr -S for Stainless Steel
-A for Aluminium

Banjo 45°



97-013-OC	Ø 11 mm
-----------	---------

Matrl: Stainless steel

Banjo 90°



97-013-OD	Ø 11 mm
-----------	---------

Matrl: Stainless steel

Banjo 90°



97-014-OA	Ø 10 mm
-----------	---------

Matrl: Stainless steel



Brake Hose Fittings

Washer

Part No.	Dimension
95-14-008	Ø 8 mm



Washer

95-14-010	Ø 10 mm
-----------	---------



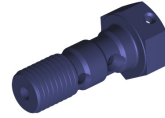
Adapter



97-003-OA	M10x1 - M10x1.25
97-003-OB	M10x1 - M10x1
97-003-OC	M10x1 - UNF 3/8"
97-003-OD	M10x1 - NPTF 1/8"

Matrl: Add to part nr -S for Stainless Steel
-A for Aluminium

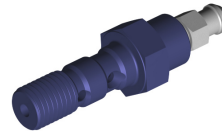
Double Banjo Bolt



Part No.	Dimension
97-005-OA	M 10x1.25
97-005-OB	M 10x1
97-005-OC	UNF 3/8"

Matrl: Add to part nr -S for Stainless Steel
-A for Aluminium

Double Banjo Bolt
bleed nipple



97-005-OD	M 10x1.25
97-005-OE	M 10x1
97-005-OF	UNF 3/8"

Matrl: Add to part nr -S for Stainless Steel
-A for Aluminium

Banjo Bolt



97-008-OA	M 8x1
-----------	-------

Matrl: Add to part nr -S for Stainless Steel
-A for Aluminium

Banjo Bolt



97-004-OA	M 10x1.25
97-004-OB	M 10x1
97-004-OC	UNF 3/8"

Matrl: Add to part nr -S for Stainless Steel
-A for Aluminium

Banjo Bolt



97-008-OB	M 8x1 Ø10 Banjo
-----------	-----------------

Matrl: Add to part nr -S for Stainless Steel
-A for Aluminium

Banjo Bolt bleed nipple



97-004-OD	M 10x1.25
97-004-OE	M 10x1
97-004-OF	UNF 3/8"

Matrl: Add to part nr -S for Stainless Steel
-A for Aluminium

Plug



97-010-OA	M 10x1.25
-----------	-----------

Matrl: Add to part nr -S for Stainless Steel
-A for Aluminium